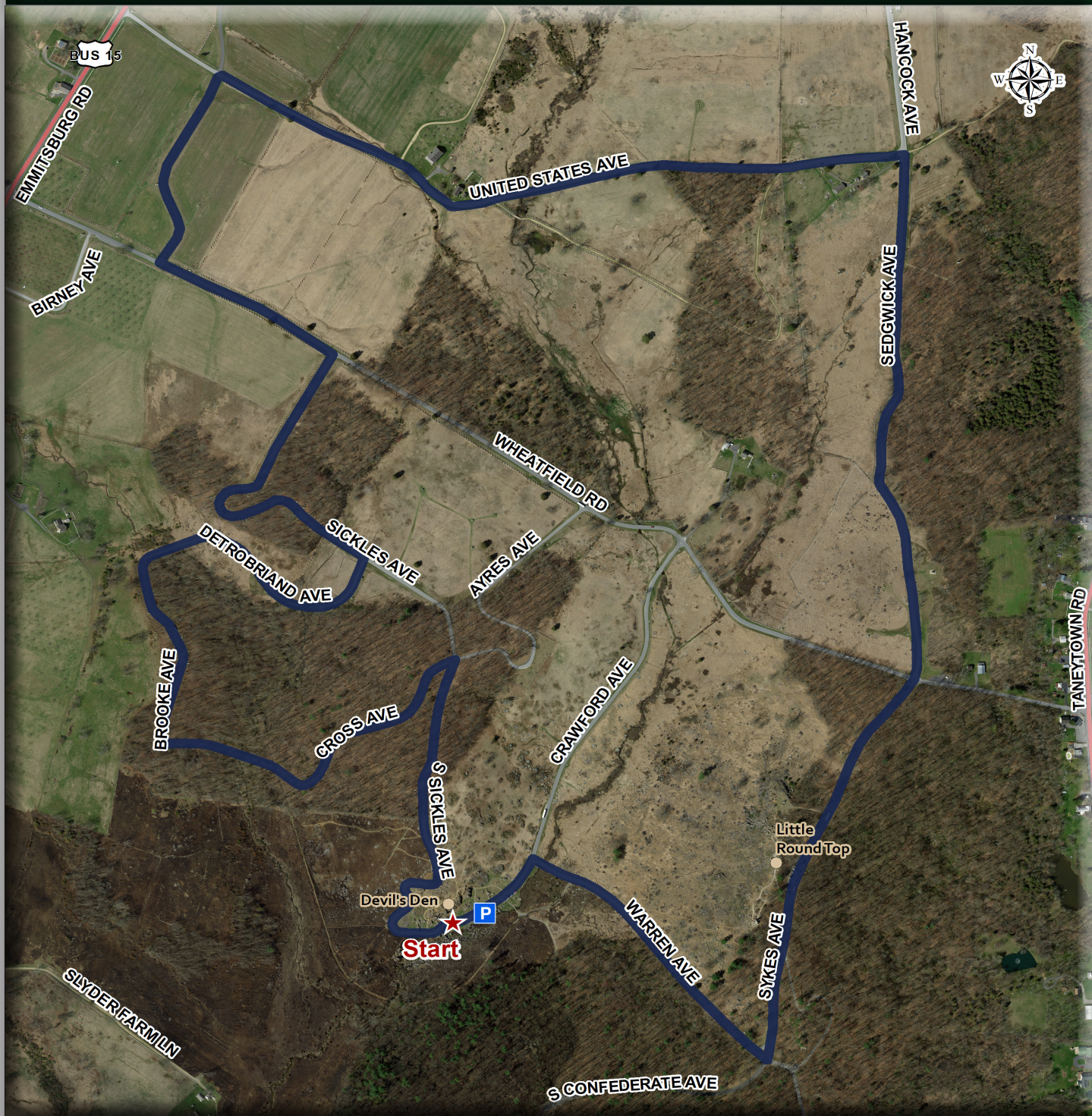


Devil's Den to Little Round Top (GNMP)

39°47'29"N 77°14'32"W | Gettysburg, PA



Distance: 3.9 Mi

Coverage: Some Shade

Traffic: Some

Gradient: Hilly

Surface: Paved Road

Parking: Parking spaces are available near Devil's Den on S.Sickles Ave in the Gettysburg National Military Park (GNMP).

Helpful Info: The trail begins on S. Sickles Ave in front of the Devil's Den.