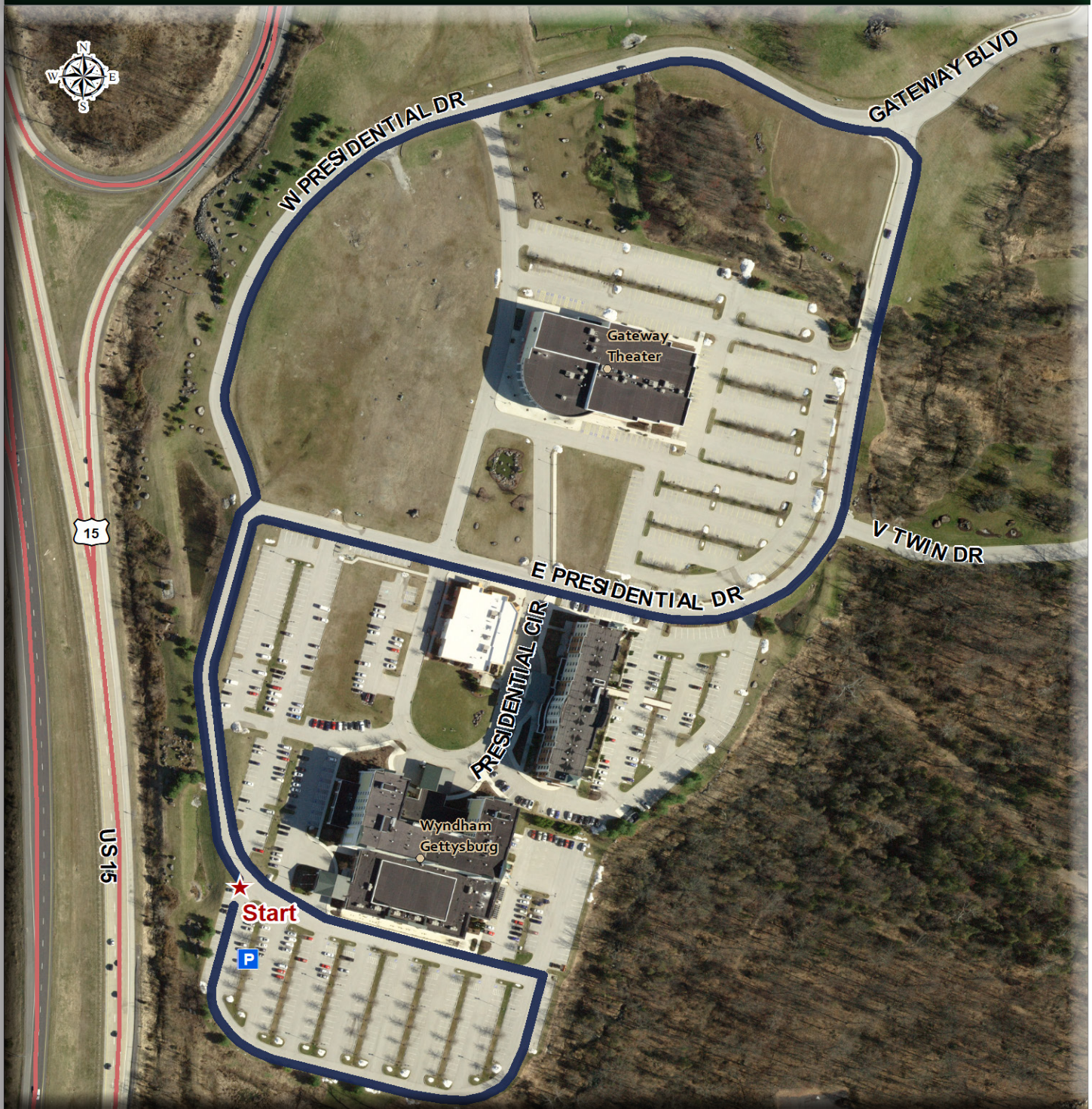


Gateway Gettysburg

95 Presidential Circle | Gettysburg, PA



Distance: 1.2 Mi

Coverage: Sunny

Traffic: Some

Gradient: Some Hills

Surface: Sidewalks and Roads

Parking: Behind the Wyndham Gettysburg Hotel at the Gateway Gettysburg Complex

Helpful Info: The trail begins at the northwest corner of the parking lot. Head north on W. Presidential Dr and follow to E. Presidential Dr. Turn left on W. Presidential Dr. and continue past the rear of the hotel and loop around the perimeter of the parking lot back to the starting point.