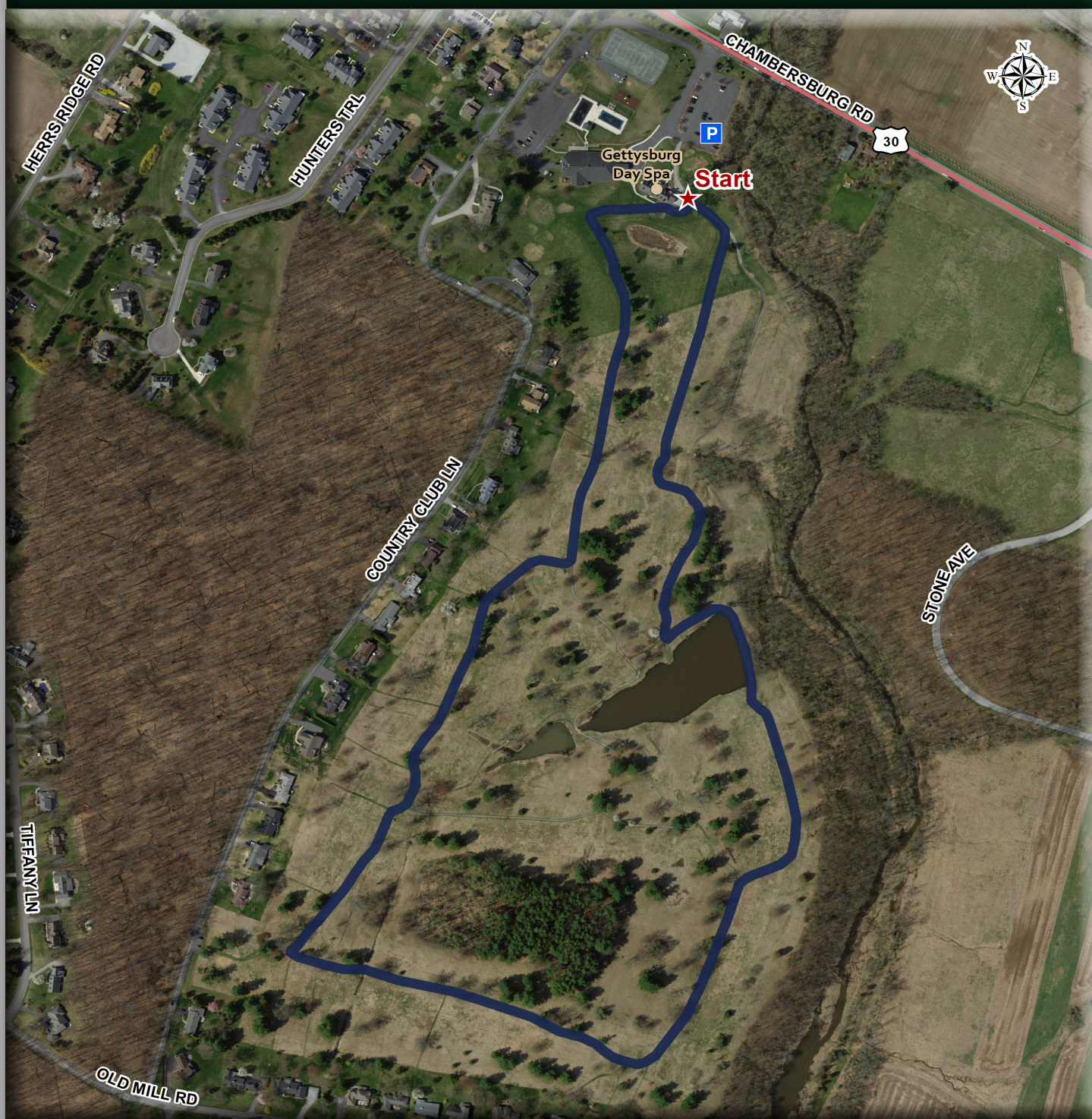


# Gettysburg Day Spa - Cart Paths (GNMP)

730 Chambersburg Rd | Gettysburg, PA



**Distance:** 1.5 Mi

**Coverage:** Some Shade

**Traffic:** None

**Gradient:** Flat

**Surface:** Gravel

**Parking:** Park in the Gettysburg Day Spa parking lot at the former Gettysburg Country Club.

**Helpful Info:** The trail begins on the eastern side of the Gettysburg Day Spa building. Follow the old golf cart paths around the outer edge of the property.