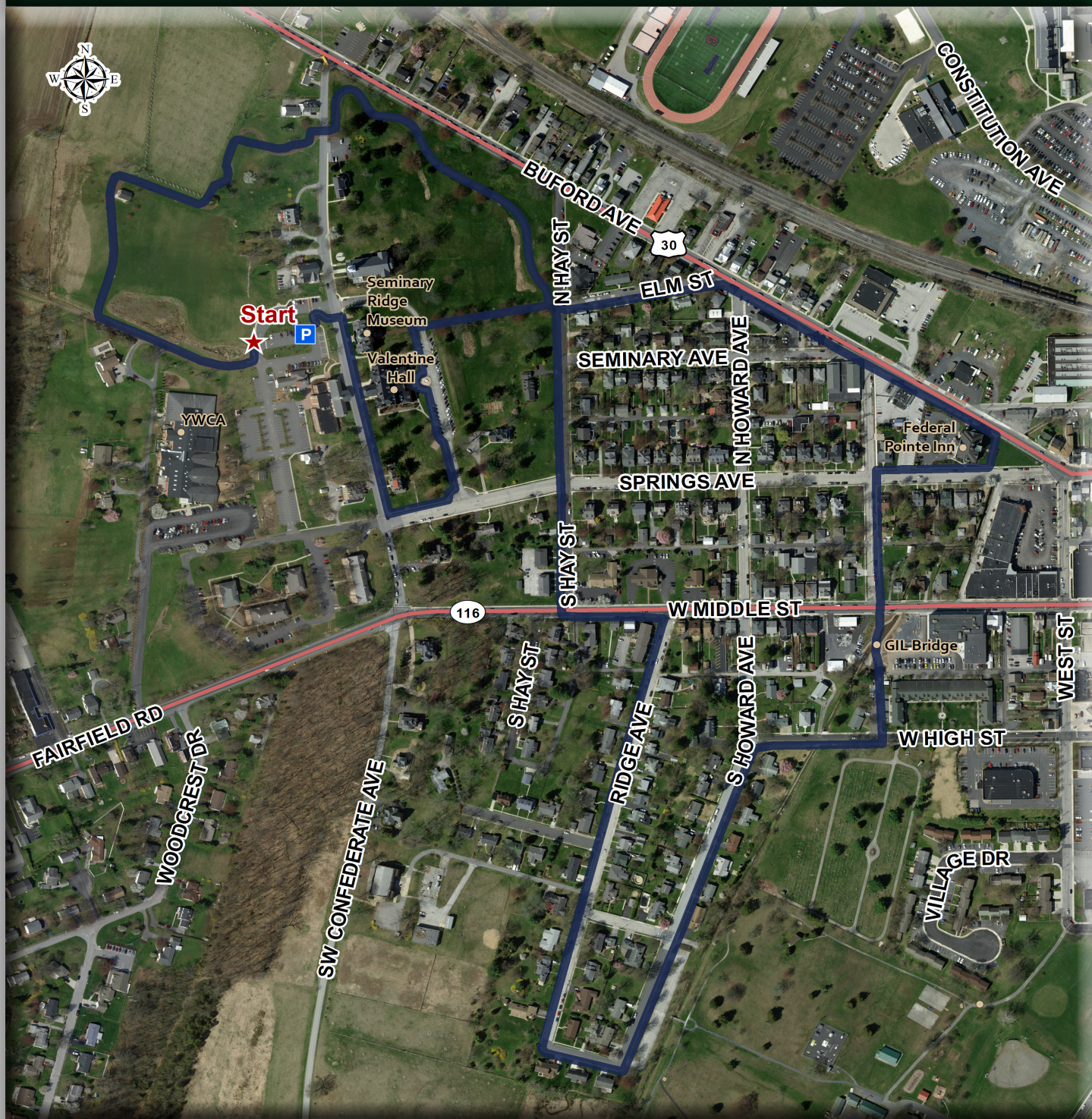


Seminary Ridge Museum and Town Trail

61 Seminary Ridge | Gettysburg, PA



Distance: 2.4 Mi

Coverage: Some Shade

Traffic: Some

Gradient: Hilly

Surface: Gravel Trail and Sidewalks

Parking: Seminary Ridge Museum at the United Lutheran Seminary - Gettysburg, Green Lot.

Helpful Info: The trail begins at the back of the Seminary Ridge Museum parking lot. When you reach the eastern entrance to the Seminary Ridge Trail, leave the trail and cross N. Hay St onto Elm St. Follow the map to use the flashing light crossing Middle St to get to the blue Gettysburg Inner Loop bridge. Follow the map to return to the Hay St. entrance of the trail. Continue on the Seminary Ridge Trail around Valentine Hall, look for the red paint on the curb, to the parking lot.