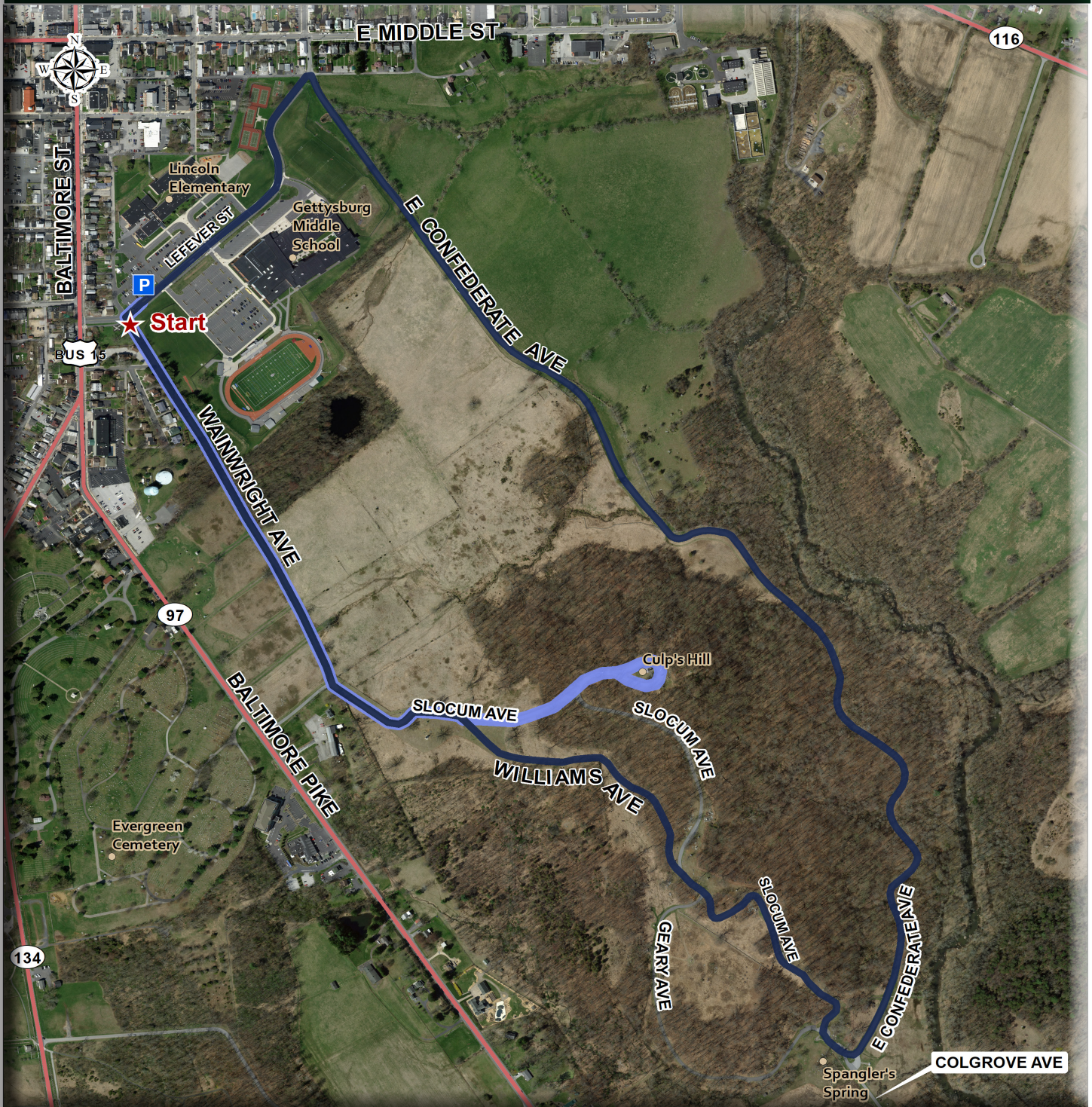


Spangler's Spring - Culp's Hill (GNMP)

37 LeFever Street | Gettysburg, PA



Distance: 1.9 or 2.8 Mi

Coverage: Some Shade

Traffic: Some

Gradient: Hilly

Surface: Paved Roadway

Parking: The Gettysburg Middle School/ Lincoln Elementary School. Park in the lots closer to Baltimore Street.

Helpful Info: The trail begins at the intersection of LeFever Street and Wainwright Ave. For a 1.9 mi walk, bear left onto Slocum Ave from Williams Ave to Culp's Hill, around Culp's Hill, and return to the start. For a 2.8 mile walk, stay on Williams Ave until it intersects with Slocum Ave, passing by Spangler's Spring, to E. Confederate Ave. As time permits, explore other roads within the Park.