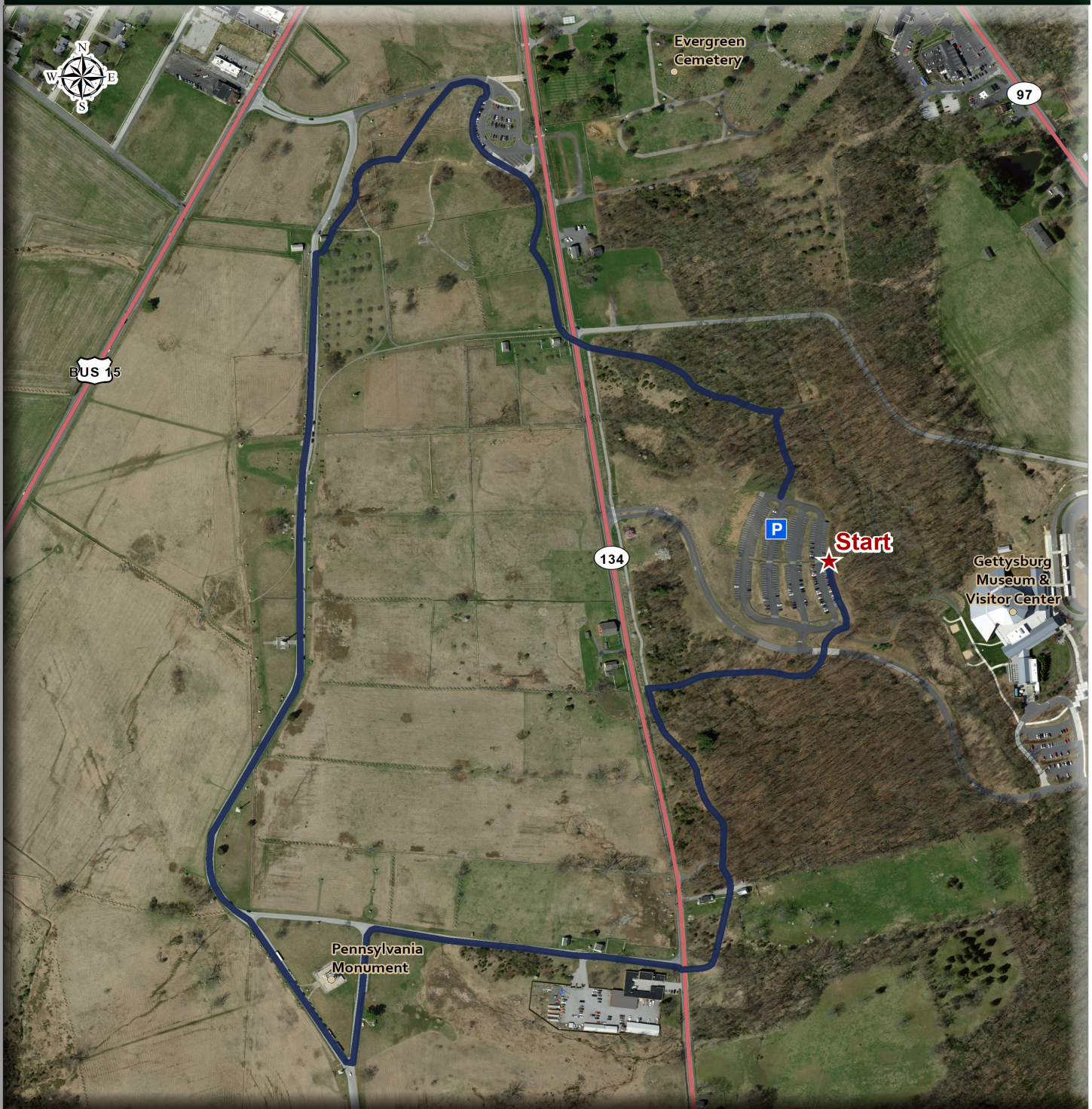


# High Water Mark to GNMP Visitor Center

1195 Baltimore Pike | Gettysburg, PA



**Distance:** 2.15 Mi

**Coverage:** Some Shade

**Traffic:** Some

**Gradient:** Mostly Flat

**Surface:** Paved Road and Trail

**Parking:** Park in Lot 3 of the Gettysburg National Military Park (GNMP) Museum and Visitor Center.

**Helpful Info:** The trail begins on the eastern edge of Parking Lot 3, in front of the row of parking spaces closest to the Visitor Center, quickly crosses the road, and enters the woods.